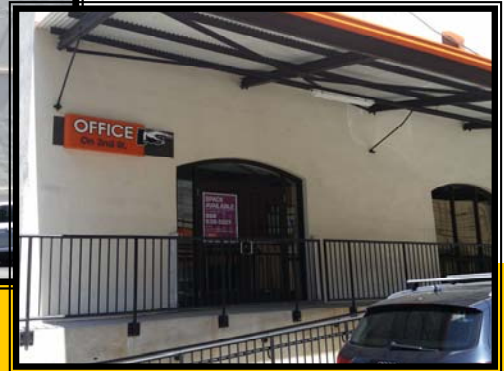
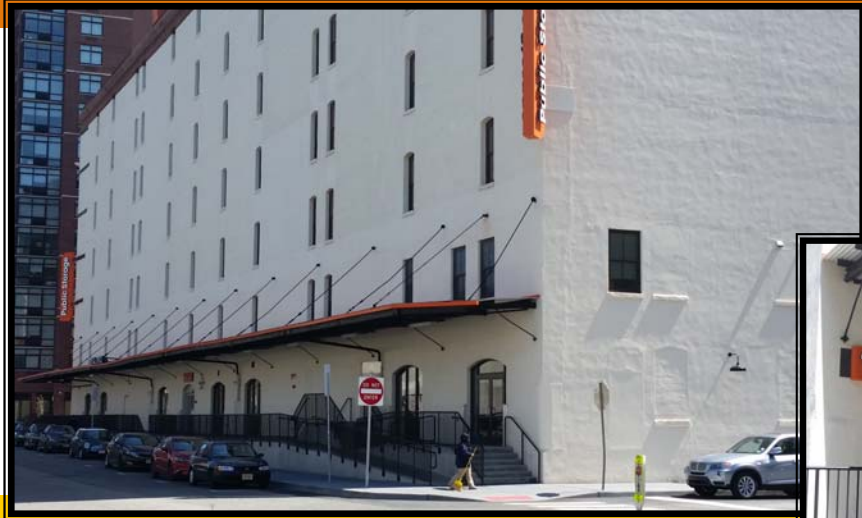


1st Floor Commercial Space for Lease Jersey City, NY



LOCATION: 124 First Street
Jersey City, NJ 07302

SIZE: 1,121 s.f. to 1,738 s.f.

UNITS AVAILABLE: Suite A: 1,758 s.f. - Call for Rates.
Suite C: 1,582 s.f.

AMENITIES: Developed Area Like New Construction
Great Visibility First Floor Street Retail
Avg. HH income of \$134,609 in 3 mi radius
Total Daytime Pop. of 1,219,000 in 3 mi. radius
Walking distance to PATH Train and harbor

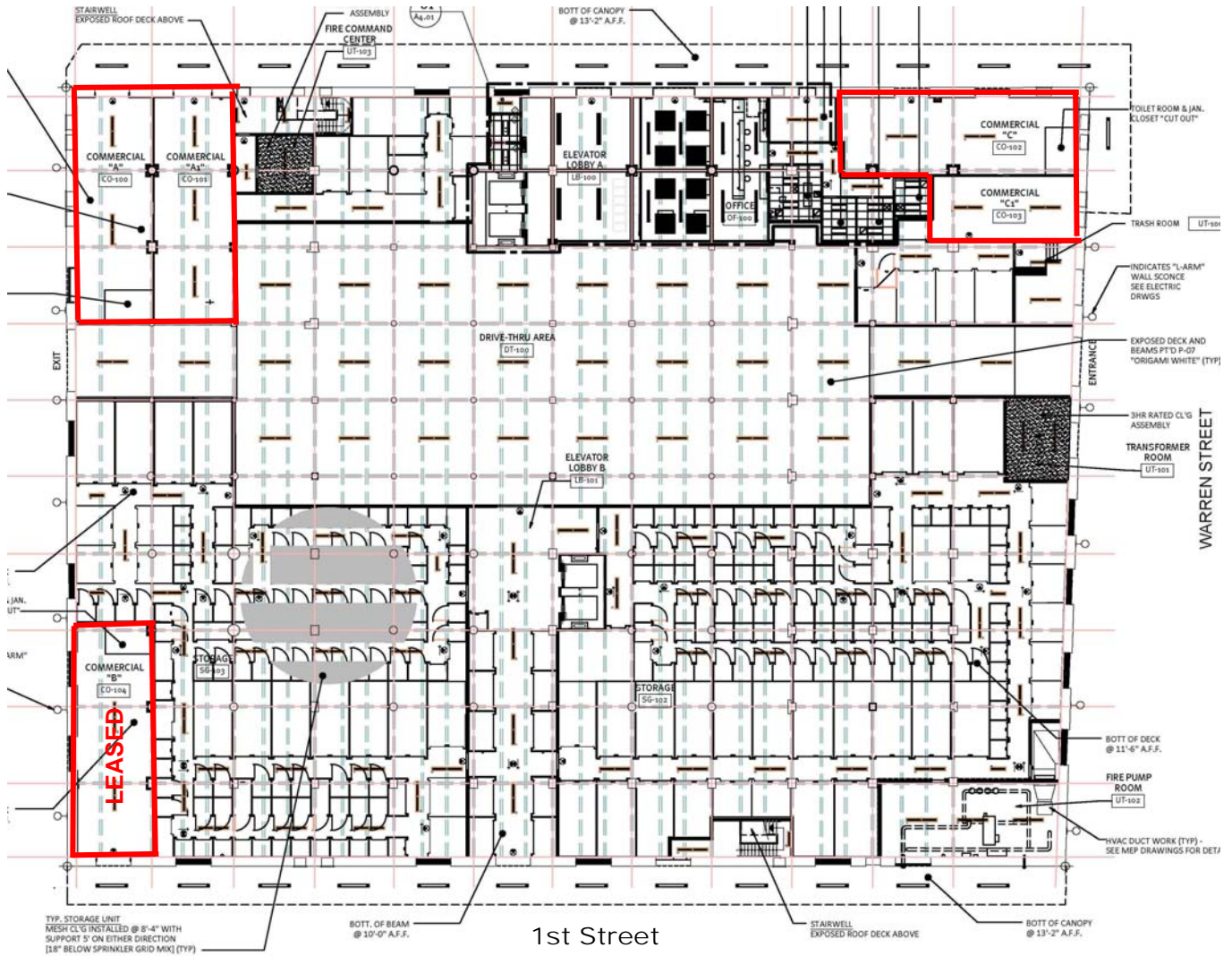
For more information on this opportunity, please contact:

Public Storage
Real Estate Division
Commercial Properties
www.pscommercialrealestate.com

Candess N. Wing
Leasing Manager
(678)224-5569 Office
(770) 334-7647 Cell
cwing@publicstorage.com

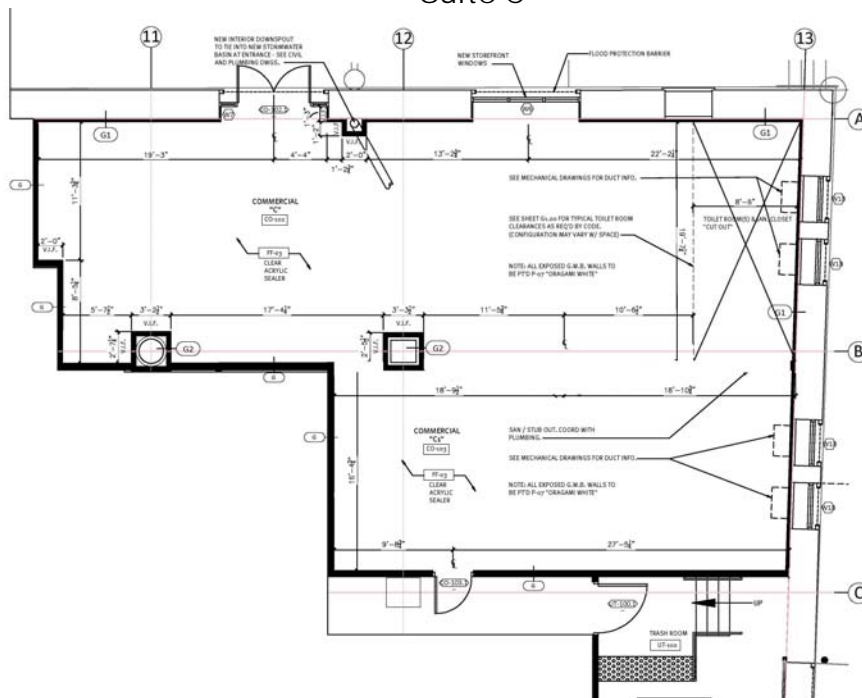
This flyer is intended only as preliminary information on space available for lease; the property owner and its representatives make no representation that it is accurate or complete. Prospective tenants are advised to conduct their own investigation of the suitability of the premises for their intended use, and to consult with legal and tax professionals regarding the consequences of entering into a lease. All terms are subject to change and all spaces are subject to prior rental or withdrawal from the market without notice.

Site Plan

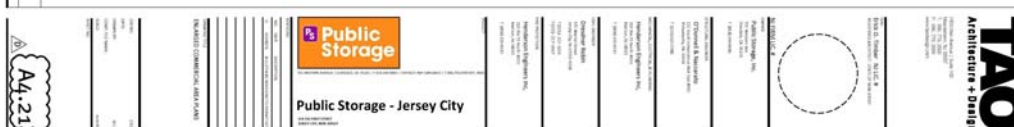


NOTE: PAINT ENTIRE UNDERSIDE (BEAMS & GIRDERS) OF SLAB

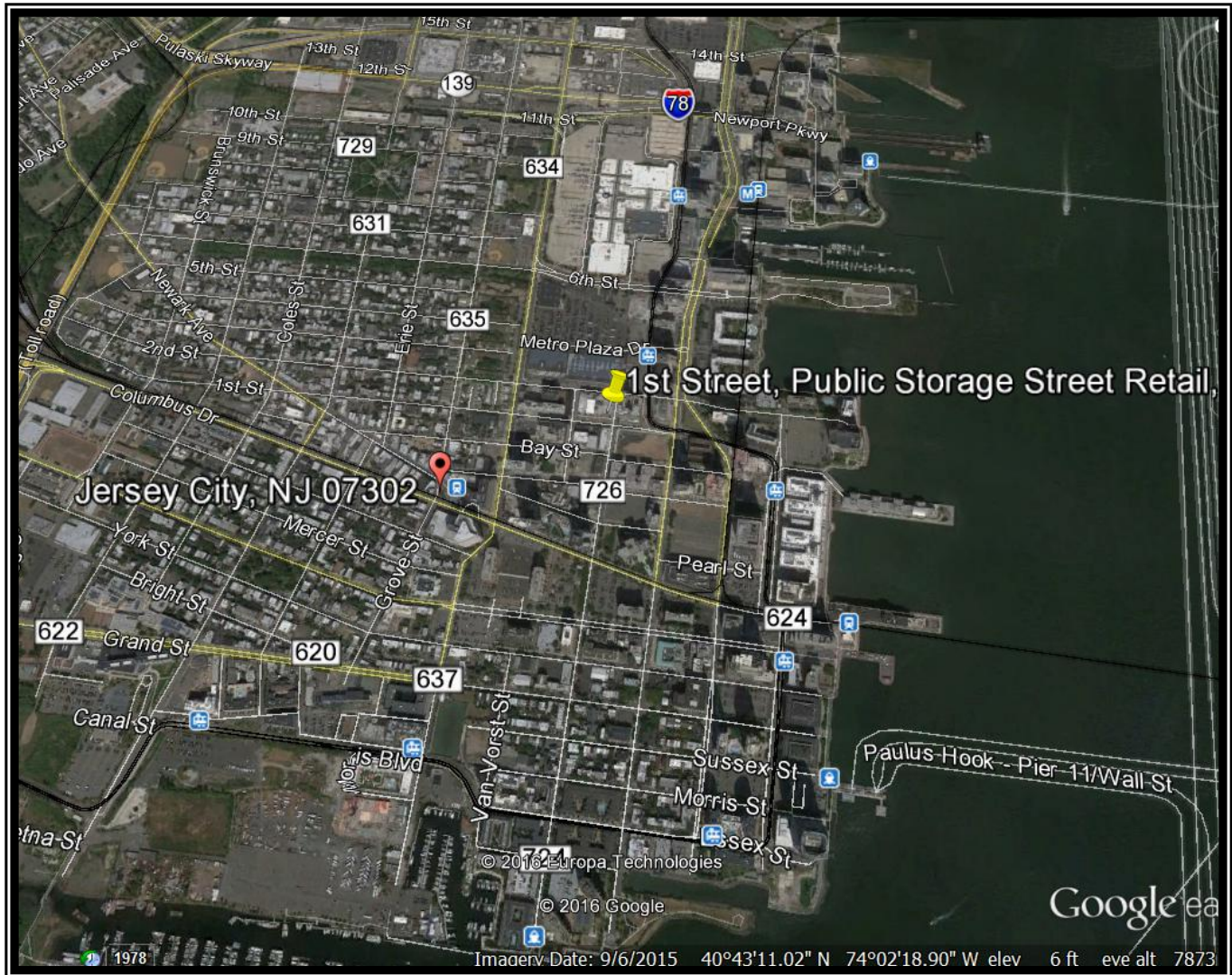
Suite C



Suite A & B



1st Floor Commercial Space for Lease Jersey City, NY



For more information on this opportunity, please contact:

Public Storage
Real Estate Division
Commercial Properties
www.pscommercialrealestate.com

Candess N. Wing
Leasing Manager
(678)224-5569 Office
(770) 334-7647 Cell
cwing@publicstorage.com