

Santiago Business Park Austin, TX

Public
Storage

COMMERCIAL
REAL ESTATE



LOCATION: 4202 Santiago Street
Austin, TX

SIZE: 750 s.f. to 1,000 s.f.

AVAILABILITY: Suite 1, 1,000 s.f. - \$2,150 per mo
*modified gross lease plus utilities

AMENITIES: Strong Demographics First Floor
24-hour site access Attached warehouse with roll up door
Excellent Visibility Access to Highway 71, IH-35 and CBD
Minutes from Austin-Bergstrom International Airport

For more information on this opportunity, please contact:

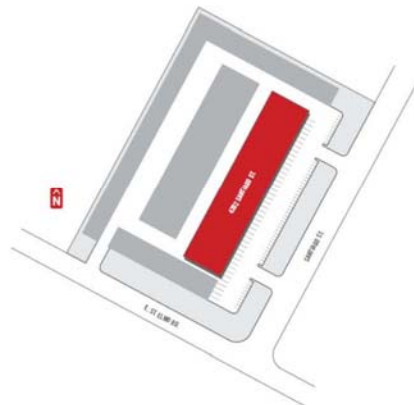
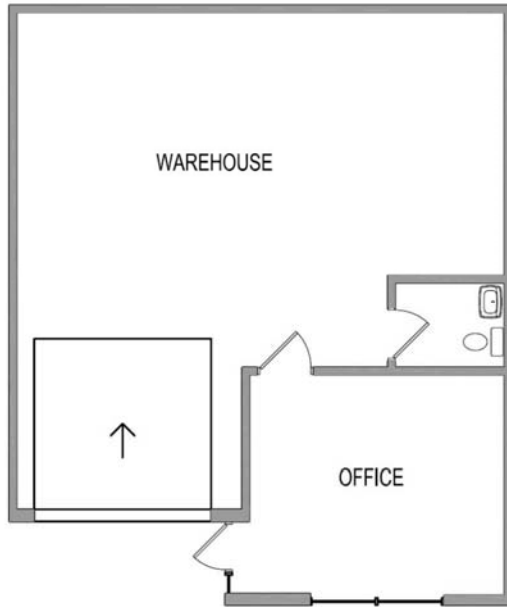
Public Storage
Real Estate Division

www.pscommercialrealestate.com

Candess N. Wing
Director of Commercial Properties
(678)567-4971 Office
(770)334-7647 Cell
cwing@publicstorage.com

This flyer is intended only as preliminary information on space available for lease; the property owner and its representatives make no representation that it is accurate or complete. Prospective tenants are advised to conduct their own investigation of the suitability of the premises for their intended use, and to consult with legal and tax professionals regarding the consequences of entering into a lease. All terms are subject to change and all spaces are subject to prior rental or withdrawal from the market without notice.

Santiago Business Park
Austin TX
SITE PLAN



SANTIAGO BUSINESS PARK – SUITE 1
4202 Santiago | Austin, Texas

1,000 SF