

RETAIL & OFFICE SPACE FOR LEASE Webster, TX



LOCATION: 401 E NASA Rd 1
Webster, TX 77598

SIZE: 750 s.f.
1,200 s.f.

Units Available: Suite 341 - 750 sf, Suite 344 - 1500sf
Suite 409 - 1200sf
****Modified Gross**

AMENITIES: Retail Amenities Nearby Developed Area
Professional Business Park Strong Demographics
Easy Access Ample Parking
Onsite Management

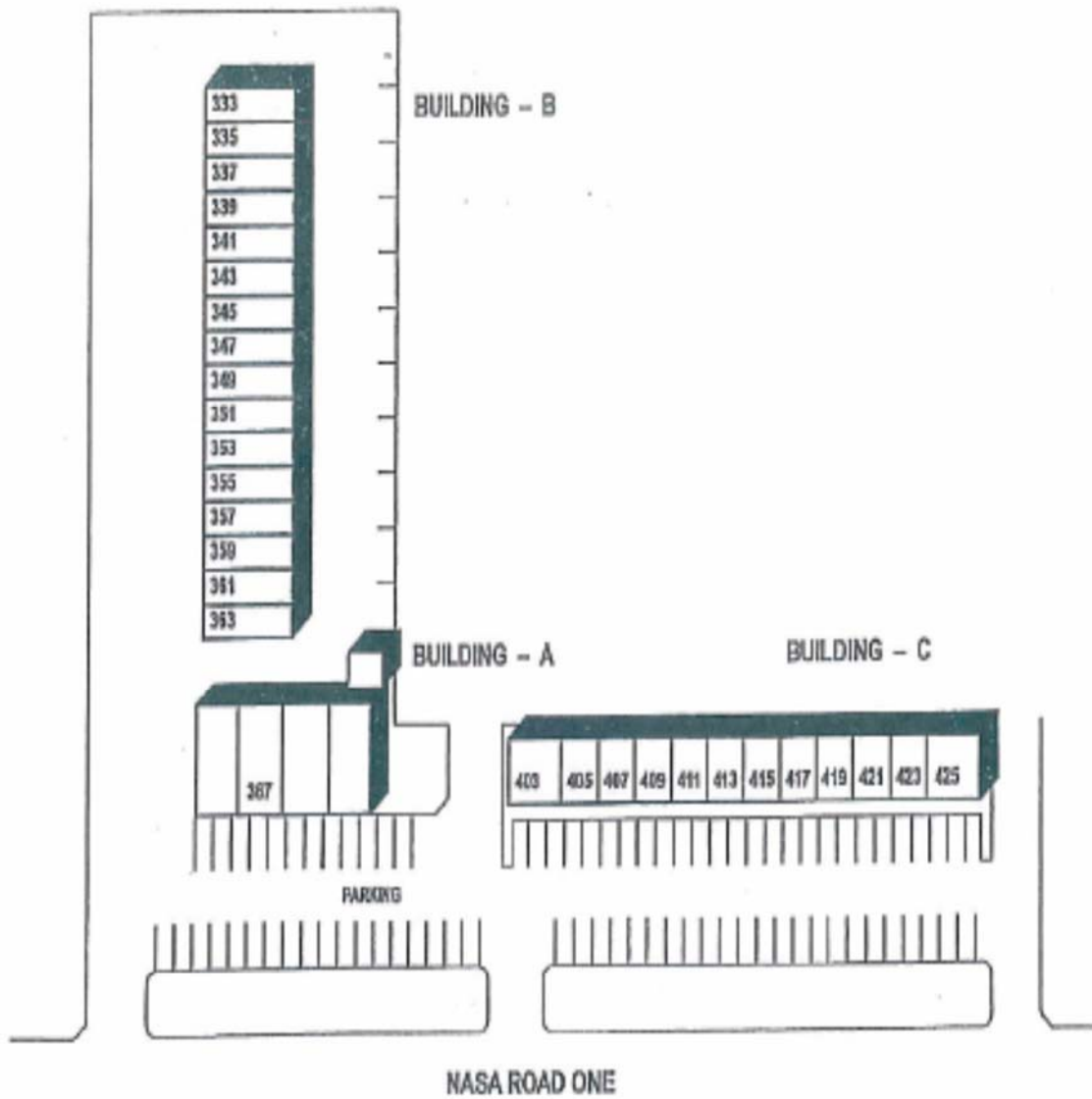
For more information on this opportunity, please contact:

Public Storage
Real Estate Division
Commercial Properties
www.pscommercialrealestate.com

Lynn Quillin
Commercial Leasing Manager
(888) 253-7221
lquillin@publicstorage.com

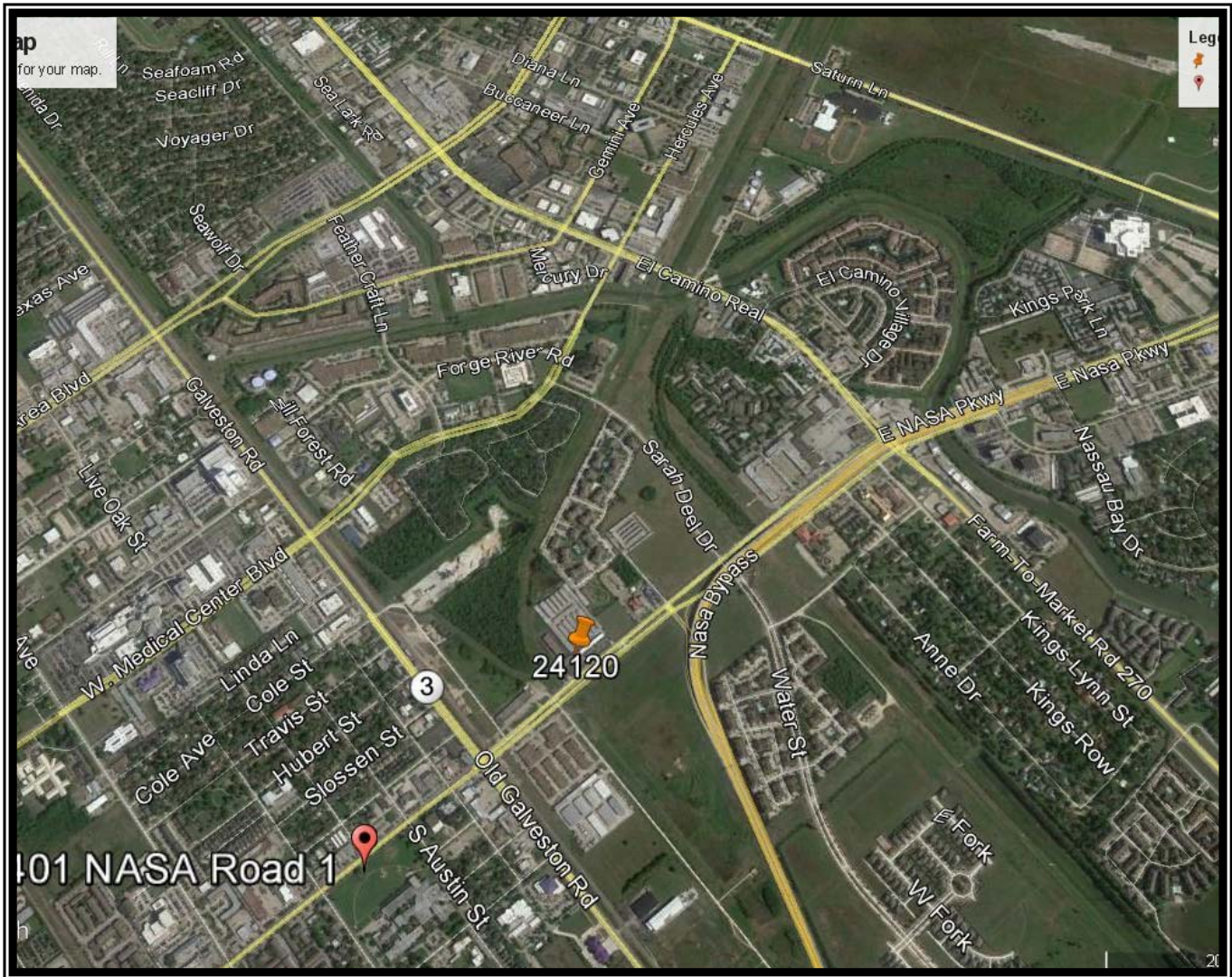
This flyer is intended only as preliminary information on space available for lease; the property owner and its representatives make no representation that it is accurate or complete. Prospective tenants are advised to conduct their own investigation of the suitability of the premises for their intended use, and to consult with legal and tax professionals regarding the consequences of entering into a lease. All terms are subject to change and all spaces are subject to prior rental or withdrawal from the market without notice.

Site Plan



RETAIL & OFFICE SPACE FOR LEASE Webster, TX

Public Storage **COMMERCIAL**
REAL ESTATE



For more information on this opportunity, please contact:

Public Storage
Real Estate Division
Commercial Properties
www.pscommercialrealestate.com

Lynn Quillin
Commercial Leasing Manager
(888) 253-7221

lquillin@publicstorage.com