

Flex Space for Lease Arlington, TX

**Public
Storage**



LOCATION: 3006 & 3008 West Division Street
Arlington, TX 76012

SIZE: 1,650 s.f. to 2,500 s.f.

AVAILABILITY: Suite Bldg 3006, Suite 200 - 2,500 s.f. - \$1,600 per mo
Suite Bldg 3006, Suite 400 - 2,500 s.f. - \$1,600 per mo
*modified gross lease plus utilities

AMENITIES: Strong Demographics Close proximity to freeway
Easy access Attached warehouse with roll up door

For more information on this opportunity, please contact:

Public Storage
Real Estate Division

www.pscommercialrealestate.com

Candess N. Wing
Director of Commercial Properties
(678)567-4971 Office
(770)334-7647 Cell
cwing@publicstorage.com

This flyer is intended only as preliminary information on space available for lease; the property owner and its representatives make no representation that it is accurate or complete. Prospective tenants are advised to conduct their own investigation of the suitability of the premises for their intended use, and to consult with legal and tax professionals regarding the consequences of entering into a lease. All terms are subject to change and all spaces are subject to prior rental or withdrawal from the market without notice.

Flex Space for Lease Arlington, TX SITE PLAN



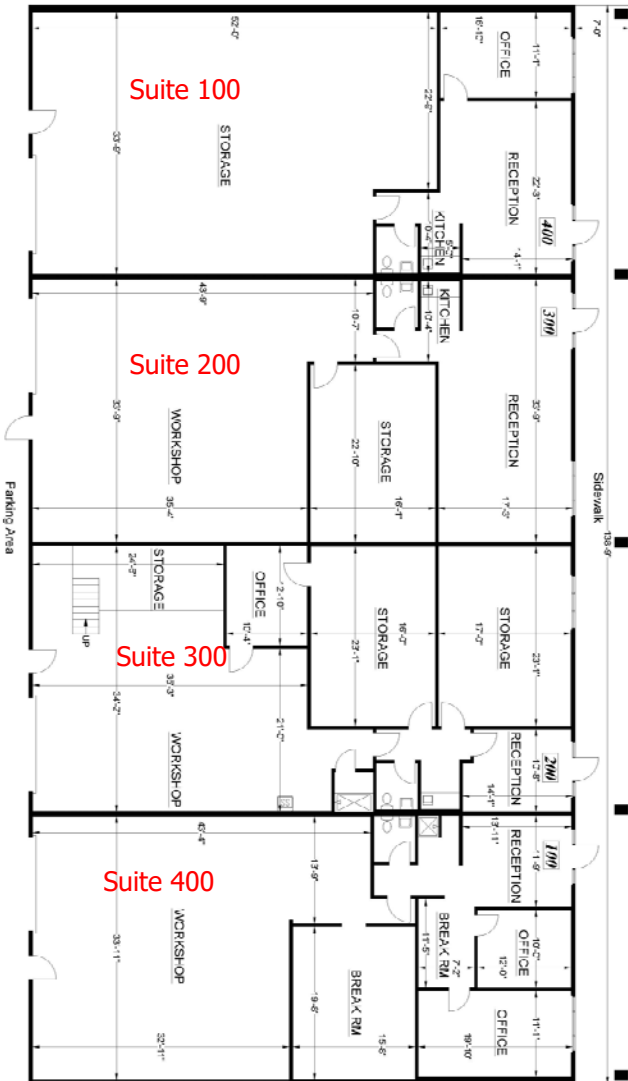
PREPARED FOR:

Public Storage
2791 Cumberland Blvd, Suite 100
Smyrna, GA 30080
Tel (770) 334-7647

Room Name	Area (sq ft)	%
Office	4,211	27%
Reception	3,121	20%
Storage	10,668	68%

FLOOR PLAN
WEST DIVISION ST

3006 WEST DIVISION STREET
ARLINGTON, TX
(As Measured April 2021)



Building Name	Size	N
Warehouse	4,211	27%
Reception	3,121	20%
Storage	10,668	68%

Survey Accuracy: +/- 0.08%

*Measurements approximate the spacing of the foot and 1/8 inch solely for clarity purposes. It is NOT to be used for leasing purposes.



Note: All dimensions shown are rounded to the nearest 1/8 inch. All measurements are recorded to 1/8 inch accuracy as documented in the final CAD drawings supplied.

LASERTECH FLOORPLANS
<http://lfp.com>
 TEL: (888) 385-8855
 FILE: 21-152-3