

RETAIL/OFFICE SPACE FOR LEASE TARPON SPRINGS, FL



LOCATION: 1730 S. Pinellas Ave
Tarpon Springs, FL 34689

SIZE: 231 S.F. - 1,700 S.F.

AVAILABILITY: Fully Occupied. Call for Rates
** Plus FL Sales Tax

AMENITIES: Ideal location

Ample Parking

Minutes from downtown

Motivated Landlord!

Developed Area

Great Visibility

Avg. HH Income of \$78K in 2 mi radius

Daytime Population of 126,142 in 3 mi radius.

For more information on this opportunity, please contact:

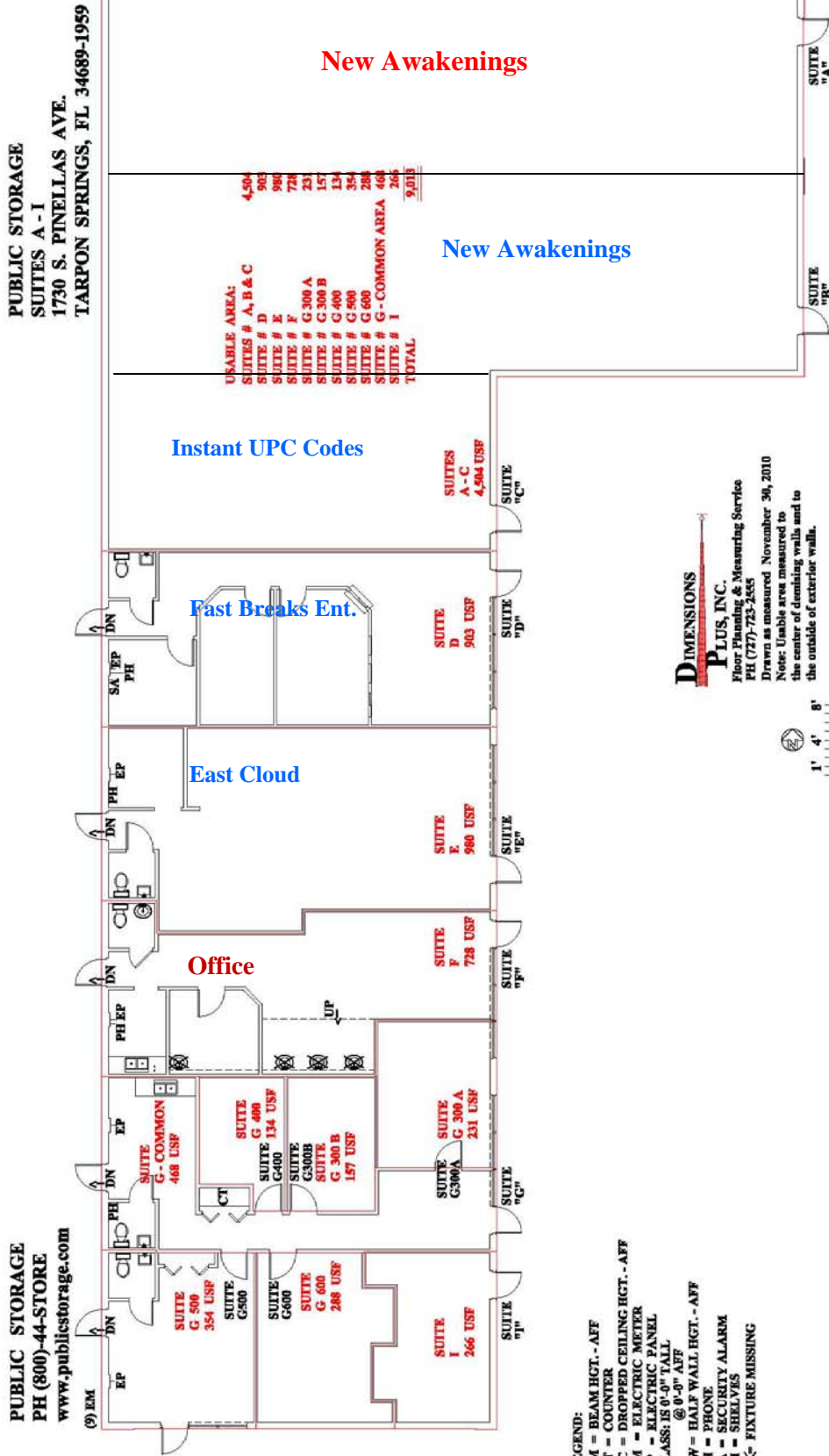
Public Storage
Real Estate Division
Commercial Properties

Candess N. Wing
Leasing Manager

(678)224-5569 Office
(770) 334-7647 Cell
cwing@publicstorage.com

This flyer is intended only as preliminary information on space available for lease; the property owner and its representatives make no representation that it is accurate or complete. Prospective tenants are advised to conduct their own investigation of the suitability of the premises for their intended use, and to consult with legal and tax professionals regarding the consequences of entering into a lease. All terms are subject to change and all spaces are subject to prior rental or withdrawal from the market without notice.

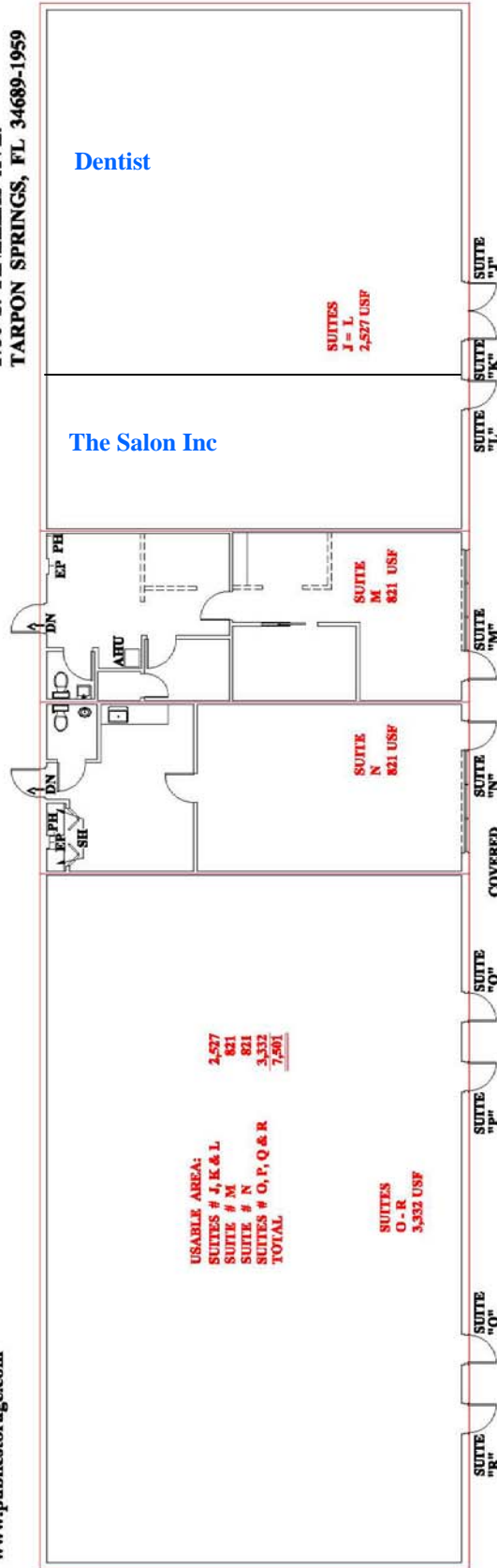
Suites For Lease



Suites For Lease

PUBLIC STORAGE
 SUITES J - R
 1730 S. PINELLAS AVE.
 TARPON SPRINGS, FL 34689-1959

PUBLIC STORAGE
 PH (800)-44-STORE
 www.publicstorage.com

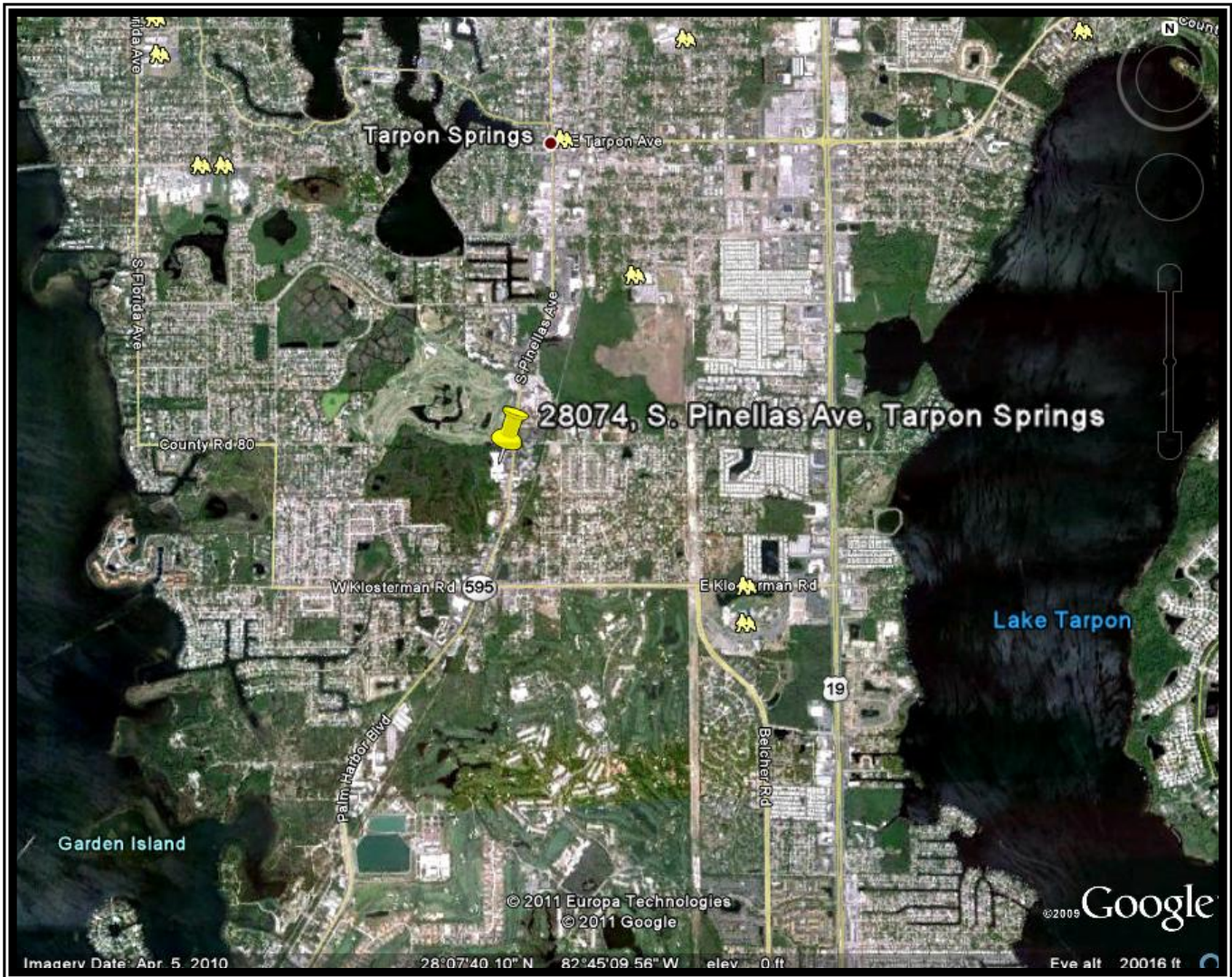


DIMENSIONS
PLUS, INC.
 Floor Planning & Measuring Service
 PH (777)-733-2555
 Drawn as measured November 30, 2010
 Note: Usable area measured to the center of dividing walls and to the outside of exterior walls.



LEGEND:
 AHU - AIR HANDLING UNIT
 DC - DROPPED CEILING HGT. - AFF
 EP - ELECTRIC PANEL
 GLASS: IS 0'-0" TALL @ 0'-0" AFF
 HW - HALF WALL HGT. - AFF
 PH - PHONE
 SH - SHELVES

RETAIL/OFFICE SPACE FOR LEASE TARPON SPRINGS, FL



For more information on this opportunity, please contact:

Public Storage
Real Estate Division
Commercial Properties

Candess N. Wing
Leasing Manager

(770)438-1095 Office
(770) 334-7647 Cell
cwing@publicstorage.com